



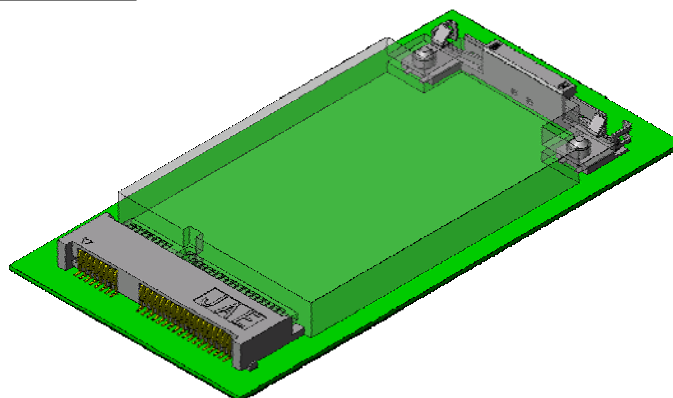
Compatible with PCI Express Mini Card

MM60 Series

CONNECTOR

MB-0147-3

February 2008

RoHS Compliant

The MM60 series is a module socket compatible with specifications standardized by the PCI-SIG.

Features

- Compatible with the PCI Express Mini Card Electromechanical spec and can be used for connecting with modules with PCI Express and USB transmission.
- Retention latch part available to fix module to connector.
Latch has mechanisms on both sides for module ejection.
- Two types of module mounting heights are developed.
Stand-off product allows components of under 1.8mm height to be placed below the module.
- Connector and latch are compatible with automatic mounting.
Packing form is embossed tape.

General Specifications

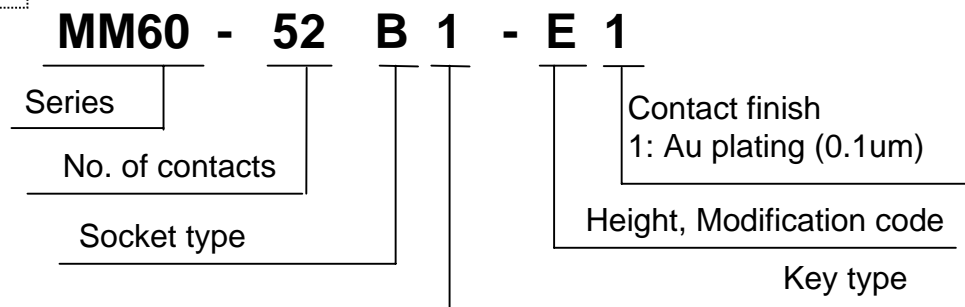
- No. of contacts: 52 pos.
- Contact resistance: 55m ohm max. (initial)
- Dielectric withstanding voltage: AC 300Vr.m.s (per minute)
- Operating temperature: -40 to+80 Deg. C
- Rated Current: 0.5A per pin
- Life time: 50 times
- Insertion loss: -1dB min.(1.25Ghz max.)/-5dB min.(3.75Ghz max.)
- Return loss: -12dBmax.(1.3GHz max.)/-7dB max.(2Ghz max.)/-4dB(3.75GHz max.)
- Cross talk(near end): -32dB max.(1.25Ghz max.)/-26dBmax.(3.75Ghz max.)

Materials and Finishes

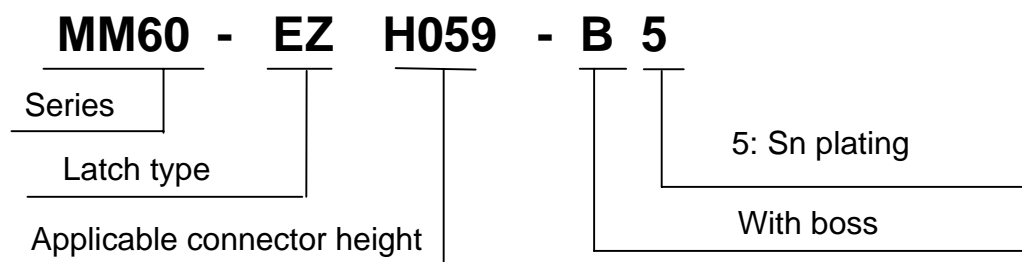
Components	Materials/ Finishes
Connector	
Contact	Copper alloy/ contact area: Au plating over Ni terminal area: Au flash over Ni
Insulator	Heat resistant material (UL94V-0)
Hold down	Copper alloy/ Sn plating
Latch	
Contact	Stainless steel/ Sn plating
Insulator	Heat resistant material (UL94V-0)

Ordering Information

Connector



Latch

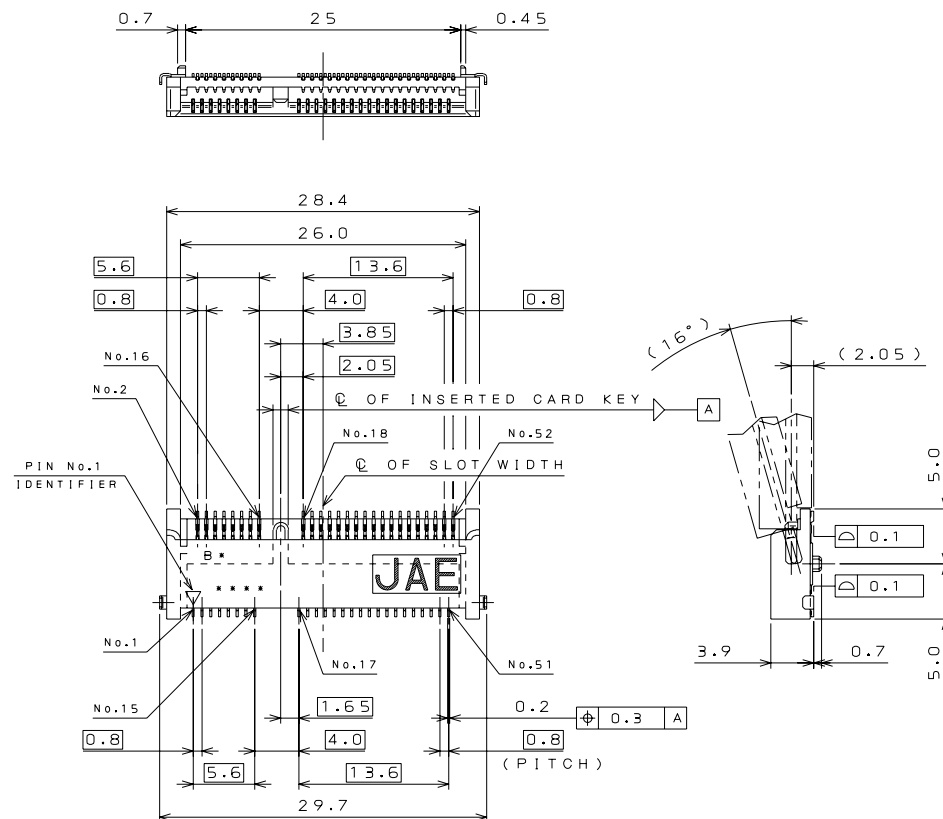


Combination

	Connector	Latch
Height 1	MM60-52B1-B1	MM60-EZH039-B5
Height 2	MM60-52B1-E1	MM60-EZH059-B5

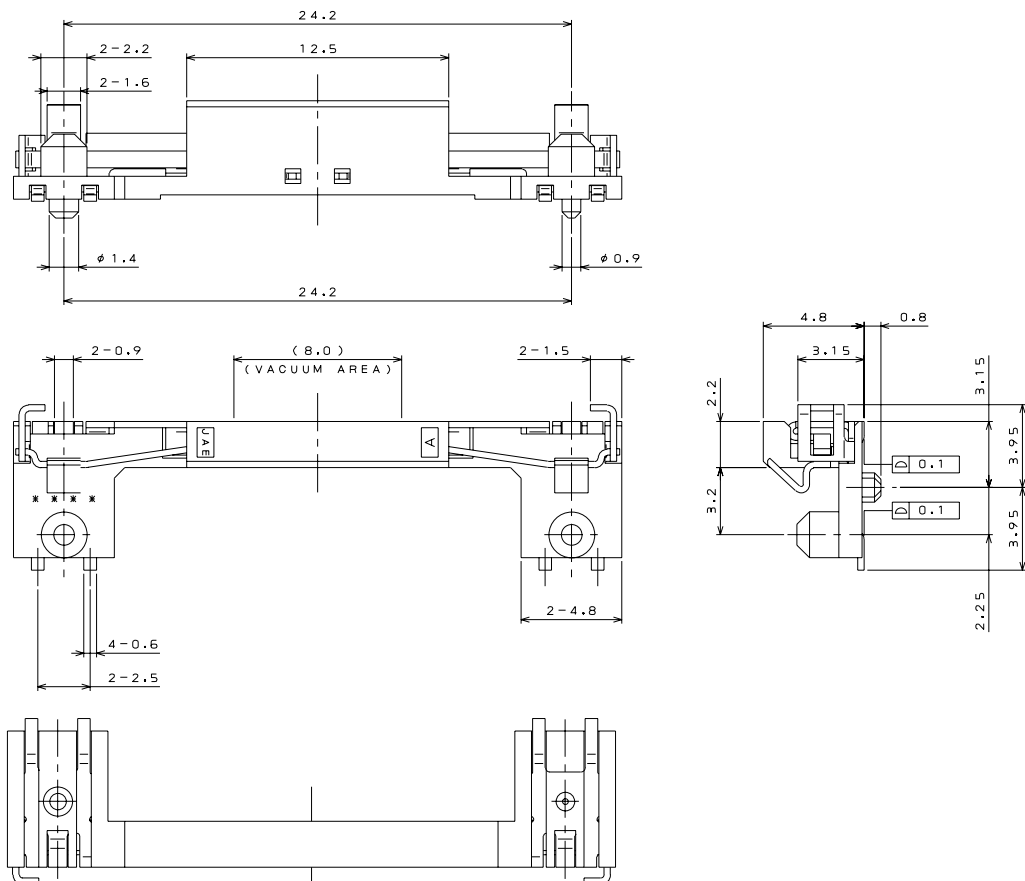
Connector side: MM60-52B1-B1 (SJ105215)

Embossed Tape Product: MM60-52B1-B1-R850 (SJ105216)

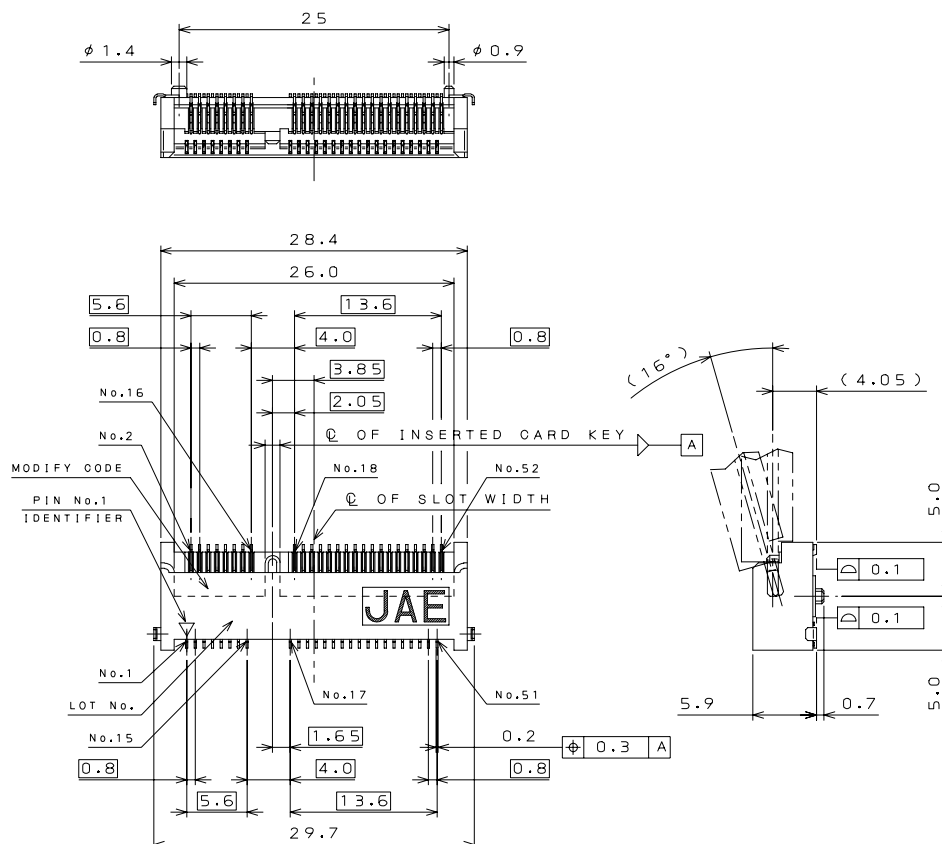


Latch side: MM60-EZH039-B5 (SJ105217)

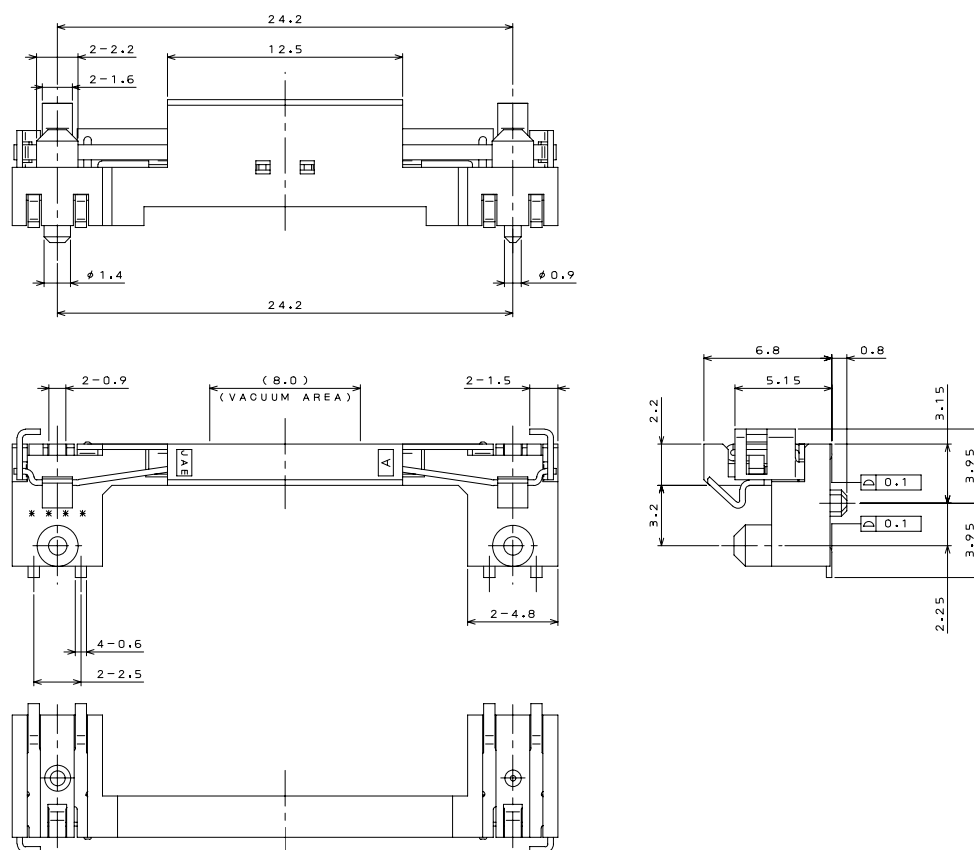
Embossed Tape Product: MM60-EZH039-B5-R850 (SJ105218)

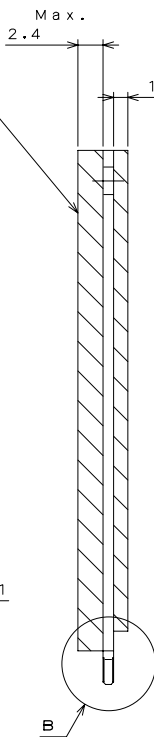


Embossed Tape Product: MM60-52B1-E*-R650 (SJ105220)



Embossed Tape Product: MM60-EZH059-B5-R650 (SJ105222)





COMPONENT AND ROUTING (ALL LAYERS, TOP AND BOTTOM SIDE) KEEP OUT AREA FOR LATCH SOLUTIONS. (NOTE 6)

Max. 35

±0.1

2-φ 2.6

φ 0.1 B C D

±0.15

5.8

8.25

COMPONENT AREA (BOTTOM SIDE)

PIN 52

4.0

2.05

PIN 2

Min. 3.2

Max. 2-R0.8

Q DATUM D

0.8

(PITCH) (BOTH SIDE)

13.6

{0.8×(18-1)} {0.8×(8-1)} (BOTH SIDE)

5.6

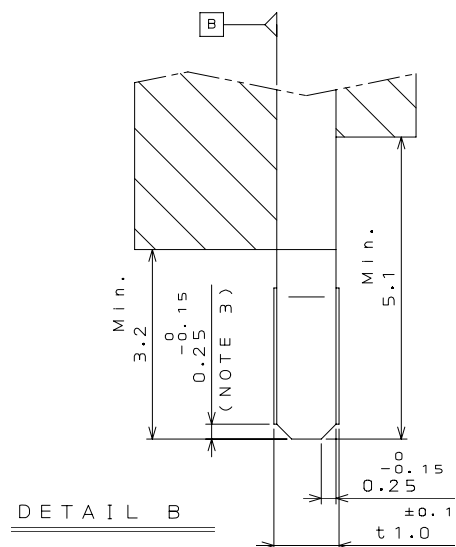
±0.15

25.7

0.1 B C D

(2.15)

(2.15)



Mouser Electronics

Authorized Distributor

Click to View Pricing, Inventory, Delivery & Lifecycle Information:

[JAE Electronics:](#)

[MM60-52B1-E1-R650](#)